

CHAPEUZINHO VERMELHO

Texto de JOEL POMMERAT | Direção CAMILA BAUER

LE PETIT CHAPERON ROUGE

LIGHTING TECHNICAL RIDER:

LIGHTING SYSTEM:

01 Digital DMX Lighting Controller (Avolites or ETC)

48 Digital Dimmer Channels

01 DMX-Buffer (splitter)

LIGHTING FIXTURES:

28 LED PAR RGBWA 3W

17 Plano-Convex 1000W

18 PAR 64 medium flood 220V

18 ETC Profiler 36 degree (with cut, iris and gobo holder)

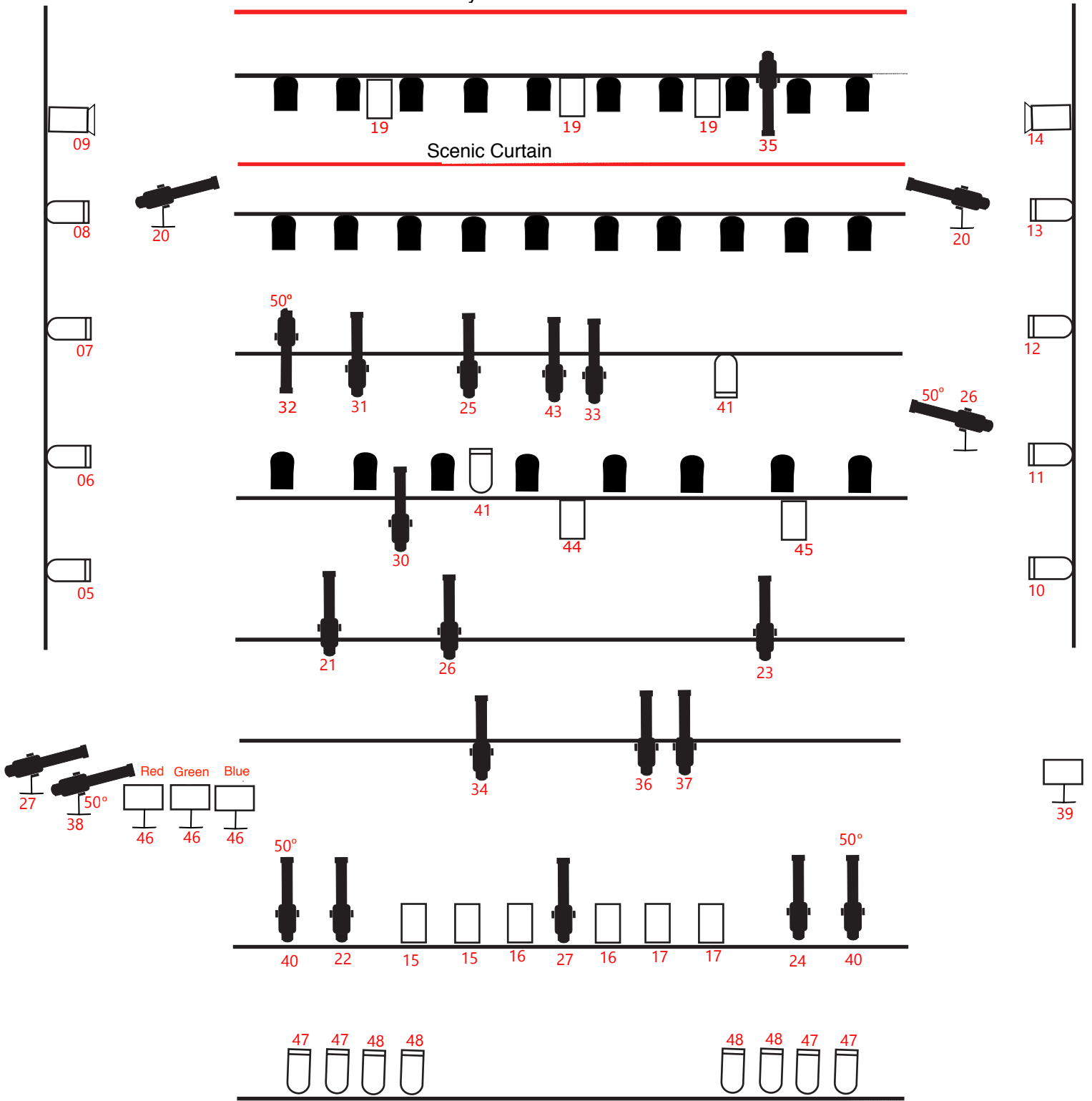
05 ETC Profiler 50 degree (with cut and gobo holder)

EFFECT:

01 DMX FOG Machine 1500W 220V

Cyclorama

Scenic Curtain



Lighting Plot

Le Petit Chaperon Rouge

Director: Camila Bauer


Lighting Designer: Thaís Andrade

Lighting Adaptation and execution: Ricardo Vivian

Contact: vivianricardo@icloud.com

+55 51 99996.4527


 Plano-Convex 1000W

 PAR 64 medium flood



 LED PAR RGBWA 3W

 Profiler ETC

 Barndoor to Plain-Convex

 Floor Projector Holder